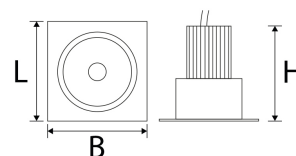
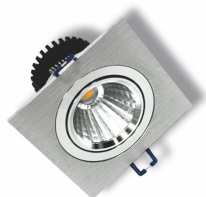


Livia Single 10-830-800LM



Technical Details:

Luminous Flux:	800 lm
LED Output:	9 W
Light Yield:	80 lm/W
Light Temperature:	3000 K
Light Color:	warmwhite
Color Rendering Index:	≥80 Ra
Color Consistency (SDCM):	<4
Beam Angle:	36 °
Light Emission:	downward
LED-Chip Manufacturer:	Bridgelux
LED-Chip:	COB
Number of LED:	1
Ignition Time:	<1 s
Power Consumption:	10 W
Output of Driver:	DC 30 - 36V, 300mA
CC/CV:	CC
Input Lamp:	plug connector
Switching Cycles:	>50.000
Ambient Temperature (TA):	-20°C - 40°C

Dimensions:	94x94x80 mm
Installation Depth:	80 mm
Cut-Out Dimensions:	77 mm
Mounting:	Decke
Montageart:	recessed
Pivot Range pan:	360 °
Pivot Range tilt:	20 °
IP Class:	20
Housing Color	silver
Housing Material:	aluminum
Coating:	anodised
Special Feature of Housing:	Brushed aluminium
Cover:	clear
Net Weight:	242 g
Type of Packaging:	box
Dimensions of Packaging:	120x90x125
Weight incl. Packaging:	0.283 kg
Content Master Package:	30
Dimensions of Master Package:	520x260x370 mm
Weight Master Package:	8 kg
Product Line:	Advance Line
Warranty	3 years
Operating Hours:	30.000 h L80/B20
Disposal Obligation:	✓
Customs Tariff Number:	9405499090
Certifications	CE,D
Barcode:	4250557807324
ohne Vorschaltgerät, siehe passendes Zubehör	
without driver, see accessories	

Information and Downloads:

