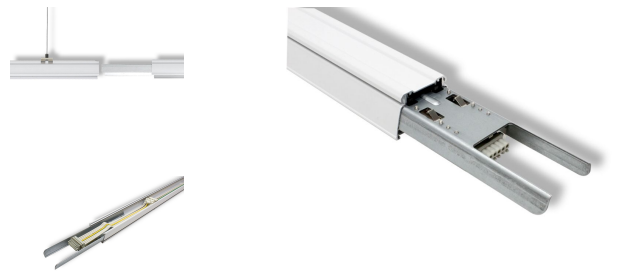


Xona Maxima Value TRUNKING RAIL 2U



Product information "Xona Maxima Value TRUNKING RAIL 2U"

Trunkingprofile for Xona Maxima LED Unit

Litegear® trunkingprofile to hold the Xona Maxima LED modules. Elegant aluminum profil with internal wiring, electrical multipin connectors and mechanical steel fork connectors. The trunking rail is available in 4 different length and with different wiring: 5 wire, 7 wire and 11 wire version for Dali dimming and emergency light function. The rail can be mounted on ceilings with clips, steel rod hanger, steel rope- or chain clip hangers. Internal female plug for internal connection to feed the LED unit. Power in and -out with multipin connectors. Quick and easy tool free interconnection of the trunkings. We offer a wide range of accessories: endcap, L-shape, T-shape and X shape node adapters or power feed in boxes, Dali driver, emergency driver and battery packs and blank covers.

profile length:
570mm, 1416mm, 2832mm, 4248mm

Technical Details:

Housing Material:	aluminum
Housing Color	white
Dimensions	2832x69x41 mm
Net Weight:	3500 g
Warranty	5 years

Information and Downloads:

