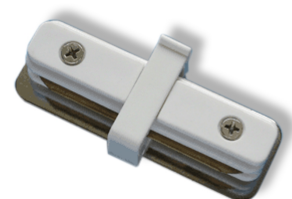
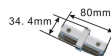


Powerrail



Product information "Powerrail"

Single Phase track rail - electrical connector

The Litegear® Powerrail is a track rail and serves as a supporting structure and power supply for single-phase track lights.

Connector to electrically connect two track rails.

Available in white and silver

- Supply voltage: 200-240V
- Housing material: plastic
- Color: silver
- Dimensions: 8 x 3.5 x 1.78cm

Technical Details:

Housing Color	silver
Dimensions	80x35x17,8 mm
Net Weight:	46 g

Information and Downloads:

