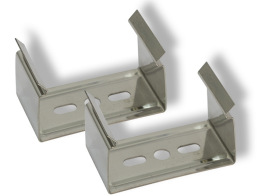
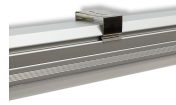


Velostra Line Clip



Product information "Velostra Line Clip"

LED linear lighting system

The Litegear® Velostra Line is a modular LED lighting system for indoor use. The Litegear® Velostra luminaire series impresses with its excellent price / performance ratio and the wide range of application possibilities. Further features are the homogeneous light distribution, a simple and fast assembly. The luminaire unit has a high system efficiency of 130 lumens / watt max. The system consists of two components: a trunking rail with 5-core cable routing and a light-emitting unit consisting of an electronic ballast and a LED board with an opal optical cover. The luminaire unit is manually pressed into the support rail by means of pressure. Two safety ropes serve as a safety device. The two units are electrically connected by a three-pole connector. The individual luminaire units are connected to each other without tools by inserting the fork connectors made from steel. The electrical supply lines are connected with a five-wire connector during the plugging process. The voltage supply is generally single-phase. You can use different additional functions via the two additional conductors: Three-phase operation by means of alternating phase tap on the LED unit. Emergency power supply with phase monitoring and battery supply for emergency power lighting. Or as an optional control signal +/- for 1-10V / Dali dimmable LED drivers. The light unit is available in 2 performance classes: 30W / 60W and two different light colors: 4000K neutral white or 6500K cold white.

applications:

Warehouse, shop, workshop, office, hall, production

Technical Details:

Ambient Temperature (TA):	-10°C - 40°C
Housing Material:	aluminum
Housing Color	Alu
Net Weight:	19 g
Warranty	3 years

Information and Downloads:

