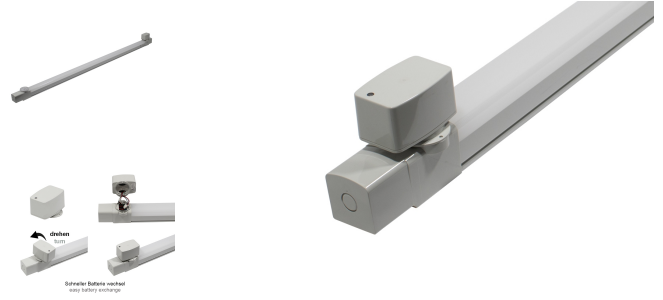


# Xona Line 1580 44-840-5500LM SENSOR EM3-ST



## Product information "Xona Line 1580 44-840-5500LM SENSOR EM3-ST"

### Weatherproof LED luminaire

The Litegear® Xona-Line is a weatherproof LED luminaire with a high protection class IP66. Xona-Line can be installed on ceilings or on walls with metal clips. With an optional rope set, the triproof luminaire can also be suspended. The housing is made of impact-resistant polycarbonate IK09 with an opal optical diffuser. The luminaire series is predestined for use in parking garages, warehouses, coldstorage, corridors or outdoors under canopies. The Xona-Line series includes numerous variants from 128 to 165cm in length and different powerclasses from 31 to 56W, which are optionally equipped with motion detectors or/and emergency battery packs for emergency lighting. The version with integrated sensor makes a simple master / slave operation possible. Thus, luminaires of this series can be combined with and without sensor in a group. A three to four-core cable is sufficient for communication. Also, 2 sensor lights can function simultaneously in one group and the whole group turns on when motion is detected. When absent, the group turns off or lights up at a reduced power of around 12% light level. With sufficient basic brightness due to incident daylight, the luminaires remain permanently off. Optional battery packs and emergency driver ensure safe escape lighting in the event of a power failure. High system efficiency of 130 Lumen/Watt guarantees a fast amortization time and huge energy saving. Easy installation due to internalelectrical terminals and a easy modular design makes it a versatile lighting system. As a result of the long service life of 50,000 hours L80, there are virtually no costs for maintenance and servicing, which guarantees reliable operational safety. Version with internal 4 wire loop!

## Technical Details:

Luminous Flux	5500 lm
Light Yield:	124 lm/W
Light Temperature:	4000 K
Color Rendering Index (CRI)	≥80 Ra
Color Consistency (SDCM):	3
Power Consumption:	45 W
Power Factor (PF):	0.9
Operating Hours:	>50.000 h L80/B10
Switching Cycles:	>100.000
Ignition Time:	<0,5 s
Ambient Temperature (TA):	-10°C - 40°C
Energy Efficiency Class:	E
Housing Material:	Polycarbonat
Housing Color	hellgrey
Dimensions	1646x76x125 mm
Net Weight:	1740 g
Warranty	5 years

### Information and Downloads:

