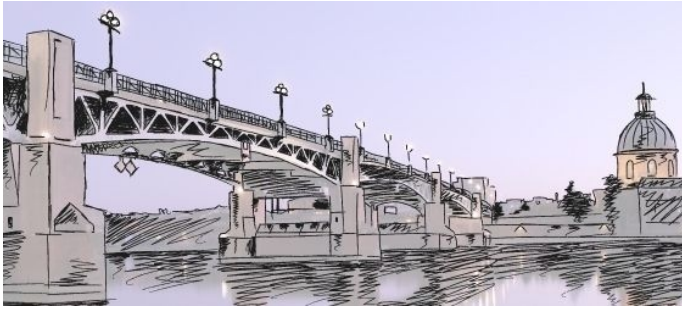


Luna Plane IP66 Floodlight 150-840-20400LM,silber



Product information "Luna Plane IP66 Floodlight 150-840-20400LM,silber"

LED Flood Light

Litegear® Luna Plane is a flat and stylish LED outdoor floodlight. Due to the use of aluminum die-cast housing, stainless steel screws and aluminum bracket it has an excellent corrosion resistance. Much better than standard floodlights with steel brackets. Luna Plane is the perfect solution for use in factories, mobile for construction work, garden, parking area or for architectural applications. You can use it permanently outside in rough environment conditions. We use very efficient LED chips with a high light output. The LED chips have an optimized heat dissipation to guarantee a long lifespan. Compared to other outdoor devices we have a much better Color Rendering Index which lets colors shine more naturally. After switching on the luminaire you have an instant full light without infrared waves which allows you to use it more closely to heat-sensitive materials and makes working in front of the floodlight more convenient and less sweaty. The internal power supply is power factor corrected for less waste of electricity.

Technical Details:

Luminous Flux	20400 lm
Light Yield:	136 lm/W
Light Temperature:	4000 K
Color Rendering Index (CRI)	≥82 Ra
Color Consistency (SDCM):	3
Power Consumption:	150 W
Power Factor (PF):	0.96
Operating Hours:	>50.000 h L80/B20
Switching Cycles:	>50.000
Ignition Time:	<0,5 s
Ambient Temperature (TA):	-20°C - 50°C
Housing Material:	aluminum
Housing Color	silver
Coating:	powder-coated
Dimensions	400x340x90 mm
Net Weight:	7380 g
Warranty	3 years

Information and Downloads:

