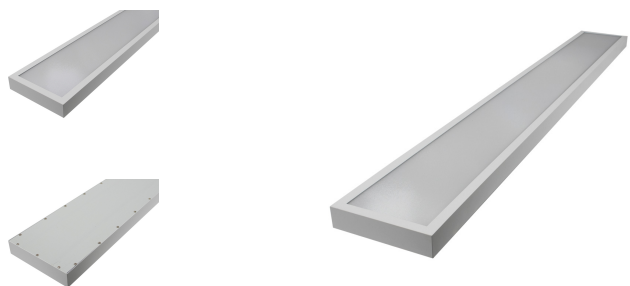


RENOVIA 150/20-60-840-7200LM BAP



Technical Details:

Luminous Flux:	7200 lm
Light Yield:	120 lm/W
Light Temperature:	4000 K
Light Color:	neutralwhite
Color Rendering Index:	≥80 Ra
Color Consistency (SDCM):	<3
Beam Angle:	90 °
Unified Glare Rating (UGR):	<19
Light Emission:	downward
LED-Chip:	SMD4014
Number of LED:	72
Ignition Time:	<0,5 s
Input Current:	AC 220-240V, 50/60Hz
Power Consumption:	60 W
Contains Driver:	✓
Power Factor (PF):	>0.9
Input Driver:	terminal
Output of Driver:	DC 25-40V, 1500mA
CC/CV:	CC
Output Current Adjustable:	✓
Input Lamp:	plug connector
Switching Cycles:	>100.000
Electrical Protection Class:	II
Ambient Temperature (TA):	-20°C - 45°C
Storage Temperature:	-20°C - 55°C

Dimensions:	1500x200x45 mm
Mounting:	ceiling,wall
Montageart:	surface mounted
IP Class:	20 (40 room side)
IK Code:	04
Housing Color	white
Housing Color (RAL Code):	similar 9016
Housing Material:	aluminum
Coating:	powder-coated
Special Feature of Housing:	L-Winkel an den Köpfen
Cover:	Mikroprismatisch PMMA
Net Weight:	2500 g
Type of Packaging:	box
Dimensions of Packaging:	1550x230x110
Weight incl. Packaging:	3 kg
Content Master Package:	6
Dimensions of Master Package:	350x260x1570 mm
Weight Master Package:	19 kg
Product Line:	Advance Line
Warranty	5 years
Operating Hours:	50.000 h L80/B10
Disposal Obligation:	✓
Customs Tariff Number:	94051190
Certifications	CE,D
Barcode:	4250557822709
Bildschirmarbeitsplatztauglich	DIN EN12464-1

Information and Downloads:



