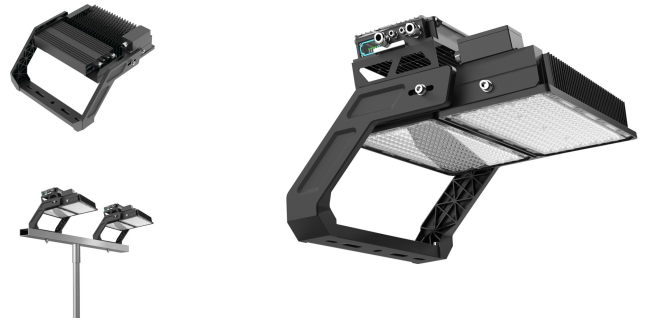


CONLUX Floodlight ASY100x60-900-740-126500LM Dali Dim



Product information "CONLUX Floodlight ASY100x60-900-740-126500LM Dali Dim"

LED Flood Light

Litegear® CONLUX is a stylish and modular LED outdoor floodlight. Available with different beam angles and power classes. Due to the use of a light weight aluminum housing, inox screws and strong bracket it has a excellent corrosion resistance. Conlux is the perfect solution for use in factories, sport fields, harbours, airports or for architectural applications. Because of it's weather sealed standard you can use it permanently outside in rough environment conditions. We use very efficient LED chips. SMD chips have a optimized heat dissipation to guarantee a long lifespan. DALI 2.0 Dimming function. Very light weight total 23,00kg (15,8 +7,2kg)
 Ball throw protected
 20kV surge protection device
 Only 3-core cable needed
 Multi power supply technology, if one power supply fails the light output will be reduced but not totally off.

Applications:

- sport field: Soccer, Tennis, Basketball, Golf
- harbour, airport, warehouse
- industrial and architectural applications

Technical Details:

- Safety Tests: EN 60598-1:2015, EN 60598-2-5:1998, ZEK01.4-08, EN 62493:2010, IEC 60598-2-5: 1998, IEC 60598-1:2008, AS/NZS 60598:2.5:2002, AS/NZS 60598.1:2013
- EMC Test: EN 55015:2013, EN 61547:2009, EN 61000-3-2:2006+A1: 2009+A2:2009, EN61000-3-3:2013

Photobiological Safety: EN62471: 2008

Technical Details:

Luminous Flux	126500 lm
Light Yield:	142 lm/W
Light Temperature:	4000 K
Color Rendering Index (CRI)	≥70 Ra
Color Consistency (SDCM):	3
Power Consumption:	890 W
Power Factor (PF):	0.95
Operating Hours:	>104.000 h L90B50
Switching Cycles:	>250.000
Ignition Time:	<0,5 s
Ambient Temperature (TA):	-20°C - 50°C
Housing Material:	aluminum
Housing Color	black
Coating:	powder-coated
Dimensions	631x585x453 mm
Net Weight:	23000 g
Warranty	5 years

Information and Downloads:

