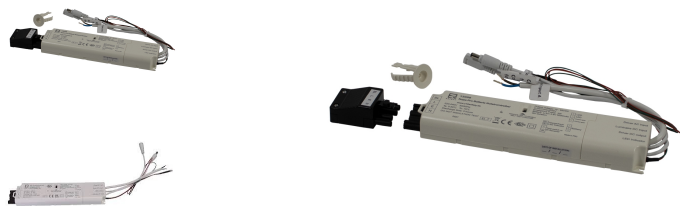


Nopa PRO Batterie Notstromtreiber LV 3W 1/3h



Technical Details:

Input Current:	AC 220-240VV, 50/60Hz
Driver Manufacturer:	Z10
Input Driver:	terminal
Output of Driver:	DC 10-50V, abh. von AusgangsspannungmA
CC/CV:	CV
Input Lamp:	Stecker mit Klemme
Electrical Protection Class:	II
Ambient Temperature (TA):	0°C - 25°C
Storage Temperature:	0°C - 40°C

Information and Downloads:



Dimensions:	240x53x26 mm
Montageart:	surface mounted
IP Class:	20
Housing Color	white
Housing Material:	Polycarbonat
Special Feature of Housing:	integrierte Akku, Stecker
Net Weight:	312 g
Testing Facility:	automatischer Selbsttest
Forward Voltage Range:	10-50V
Battery Warranty:	3
Discharge Duration:	≥ 3 h
Battery Type:	Li-Ion
Battery Current:	5000 mA
Battery Charge Duration:	8 h
Initial Charge Duration:	16 h
Charging Power Consumption:	5 W
Battery Cell Quantity	2
Standards for emergency luminaires:	DIN EN 60598-2-22, DIN EN 62034: 2012, Anforderung nach DIN EN 50172
Type of Packaging:	box
Weight incl. Packaging:	0.366 kg
Content Master Package:	24
Dimensions of Master Package:	336x319x207 mm
Weight Master Package:	8,5 kg
Product Line:	Advance Line
Warranty	3 years
Disposal Obligation:	✓
Customs Tariff Number:	9405499090
Certifications	CE
Barcode:	4260733770359

optional IR Empfänger für AST Fernbedienung

Umschaltweiche für CC Treiber

autom. wöchentlicher und jährlicher Selbsttest

green/rede Status LED +Testknopf