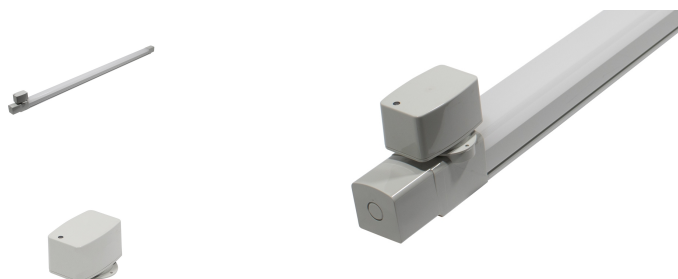


# Xona Line 1280 32-840-4000LM EM3-ST



## Technical Details:

Luminous Flux:	4000 lm
LED Output:	30 W
Light Yield:	125 lm/W
Light Temperature:	4000 K
Light Color:	neutralwhite
Color Rendering Index:	≥80 Ra
Color Consistency (SDCM):	<3
Beam Angle:	120 °
Light Emission:	downward
LED-Chip:	SMD 2835
Ignition Time:	<0,5 s
Input Current:	AC 220-240V, 50/60Hz, DC 180-240V
Power Consumption:	32 W
Contains Driver:	✓
Power Factor (PF):	>0.9
Input Driver:	terminal
Input Lamp:	Terminal
Switching Cycles:	>100.000
Electrical Protection Class:	II
Compatible with Emergency Current:	✓
Ambient Temperature (TA):	-20°C - 45°C
Storage Temperature:	-20°C - 55°C

Dimensions:	1313x78x125 mm
Mounting:	ceiling,wall
Montageart:	surface mounted
IP Class:	66
IK Code:	09
Housing Color	hellgrey
Housing Material:	Polycarbonat
Special Feature of Housing:	drehbare Endkappe
Cover:	opal
Luminaire Type:	Fluchtwegleuchtung
Battery Warranty:	2
Discharge Duration:	≥3 h
Battery Type:	LiFePo4
Battery Current:	1500 mA
Battery Charge Duration:	10-12 h
Initial Charge Duration:	16 h
Charging Power Consumption:	35 W
Luminous Flux in Battery Mode:	350 lm
Standards for emergency luminaires:	DIN EN 62034: 2012, Anforderung nach DIN EN 50172
Type of Packaging:	box
Product Line:	Advance Line
Warranty	5 years
Operating Hours:	50.000 h L80/B10
Disposal Obligation:	✓
Customs Tariff Number:	9405114090
Certifications	CE,LM80,D
Barcode:	4250557818870
Notstrombetrieb 3h mit Selbsttest	

Information and Downloads:



Vergleichbare Helligkeit: wie 2 x 36W T8 Röhre

similar brightness as 2 x 36W T8 fluorescent tube

Master/Slave option, "D" für Oberflächentemp. <90°C