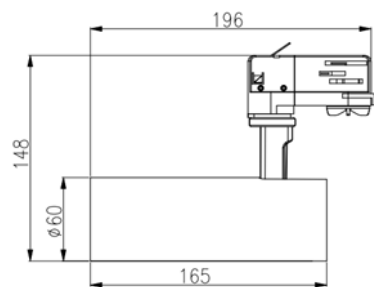


Lareda MKII 12-930-985LM BL TRIAC DIM



Technical Details:

Luminous Flux:	985 lm
LED Output:	11 W
Light Yield:	82 lm/W
Light Temperature:	3000 K
Light Color:	warmwhite
Color Rendering Index:	≥90 Ra
Color Consistency (SDCM):	<4
Beam Angle:	36 °
Unified Glare Rating (UGR):	<16
Light Emission:	
Dimmable:	✓
Method of Dimming:	"Triac Phasen-/abschnitt"
LED-Chip Manufacturer:	Bridgelux
LED-Chip:	COB
Number of LED:	1
Ignition Time:	<0,5 s
Input Current:	AC 220 - 240V, 50/60Hz
Power Consumption:	12 W
Contains Driver:	✓
Driver Manufacturer:	AlDimming
Power Factor (PF):	>0.56
Input Driver:	lighting track
Output of Driver:	DC 30-42V, 300mA
CC/CV:	CC
Input Lamp:	Power rail
Switching Cycles:	>100.000
Electrical Protection Class:	II
Ambient Temperature (TA):	-10°C - 35°C
Storage Temperature:	-20°C - 50°C

Dimensions:	196x60x148 mm
Mounting:	ceiling,wall
Montageart:	surface mounted
Pivot Range pan:	350 °
Pivot Range tilt:	90 °
IP Class:	20
Housing Color	black
Housing Material:	aluminum
Coating:	powder-coated
Special Feature of Housing:	3-Phase Track Adapter
Cover:	Lens
Net Weight:	483 g
Type of Packaging:	box
Dimensions of Packaging:	83*68*236
Weight incl. Packaging:	0.53 kg
Content Master Package:	24
Dimensions of Master Package:	500x280x256 mm
Weight Master Package:	13,8 kg
Product Line:	Advance Line
Warranty	3 years
Operating Hours:	30.000 h L80/B20
Disposal Obligation:	✓
Customs Tariff Number:	9405423990
Certifications	CE,LM80,D
Barcode:	4250557822808
perfekte Blendungsbegrenzung	
für Wohnraum, Museum, Shop oder Deko	
Phasen-/abschnitt Dimmung	

Information and Downloads:

