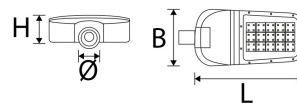
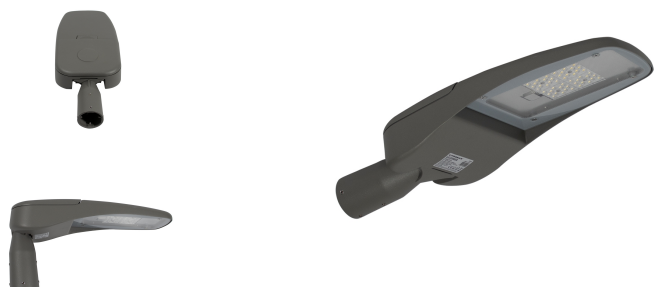


# Aversa 60-740-8200LM



## Technical Details:

Luminous Flux:	8200 lm
LED Output:	58 W
Light Yield:	137 lm/W
Light Temperature:	4000 K
Light Color:	neutralwhite
Color Rendering Index:	≥74 Ra
Color Consistency (SDCM):	<6
Beam Angle:	150x80 °
Light Emission:	downward
LED-Chip Manufacturer:	Cree
LED-Chip:	SMD 3030
Ignition Time:	<0,5 s
Input Current:	AC 220 - 240V, 270mA, 50/60Hz
Power Consumption:	60 W
Contains Driver:	✓
Driver Manufacturer:	Philips
Power Factor (PF):	>0.96
Input Driver:	cable with flying leads
CC/CV:	CC
Input Lamp:	terminal
Switching Cycles:	>100.000
Electrical Protection Class:	II
Ambient Temperature (TA):	-20°C - 40°C

Dimensions:	600x260x110 mm
Montageart:	surface mounted
Pivot Range tilt:	90 °
IP Class:	66
IK Code:	09
Housing Color	betongrey
Housing Color (RAL Code):	similar 7023
Housing Material:	aluminum
Coating:	lacquered
Special Feature of Housing:	Top cover
Net Weight:	5003 g
Type of Packaging:	box
Dimensions of Packaging:	645x280x135
Weight incl. Packaging:	5.68 kg
Content Master Package:	1
Dimensions of Master Package:	645x280x135 mm
Weight Master Package:	5,68 kg
Product Line:	Premio Line
Warranty	5 years
Operating Hours:	100.000 h L70/B50
Disposal Obligation:	✓
Customs Tariff Number:	94051990
Certifications	CE,LM80
Barcode:	4250557820415
Mastaufnahme Ø:	76 mm
SPD Überspannungsschutz integriert	
Philips Xitanium Driver 65W 0,7A	
tempered glass	

Information and Downloads:



